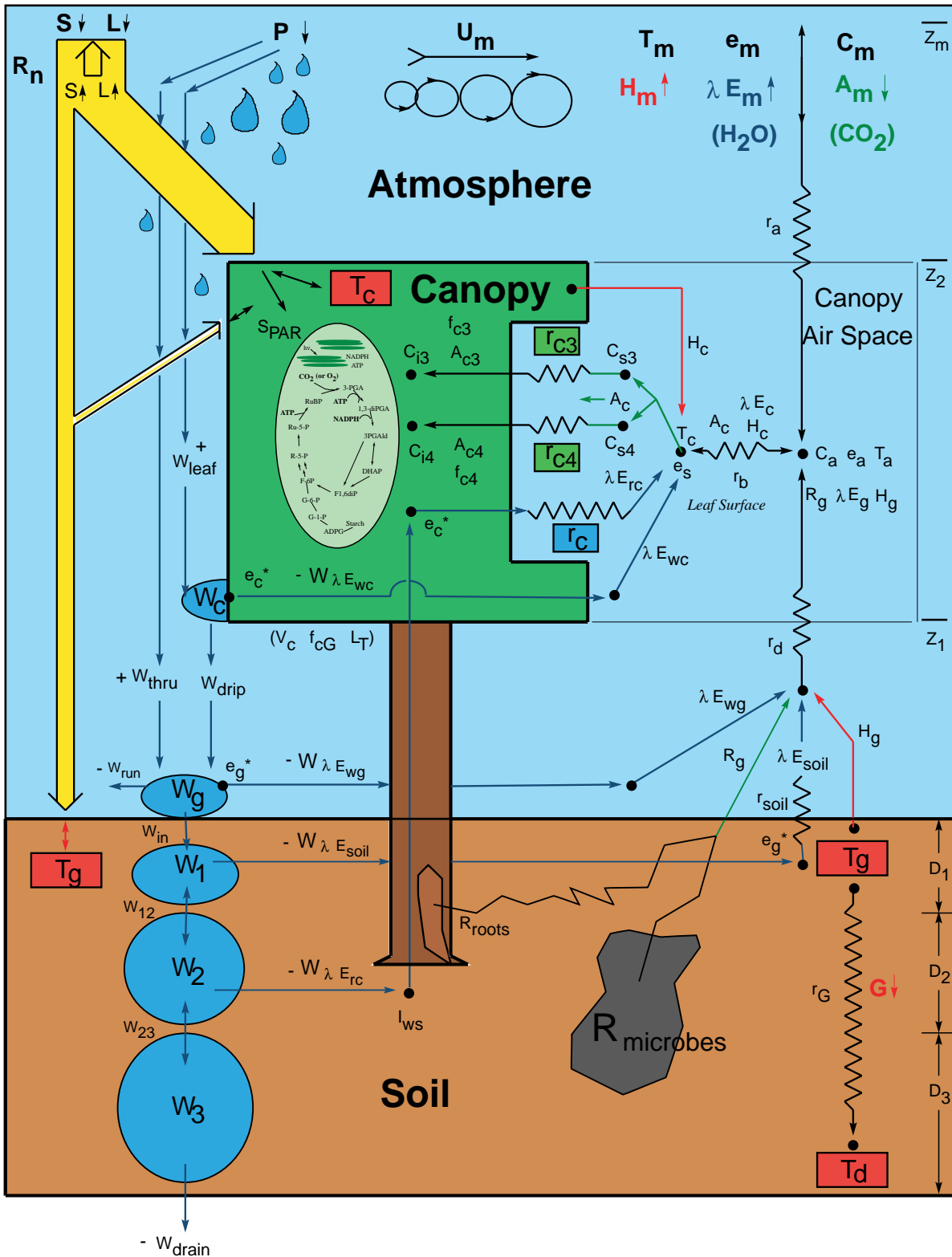
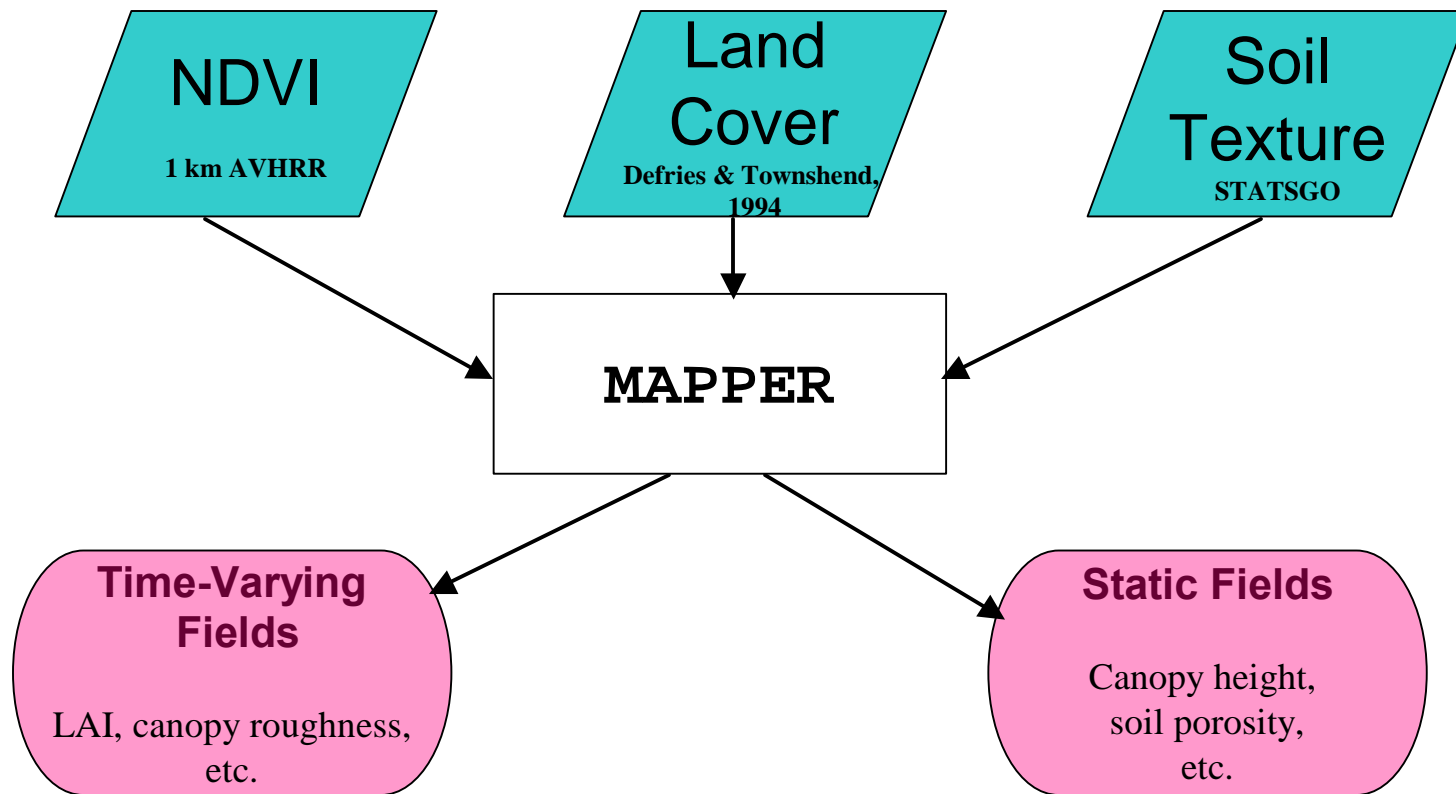


# Simple Biosphere Model, version 2

SiB2; Sellers *et al*, 1996

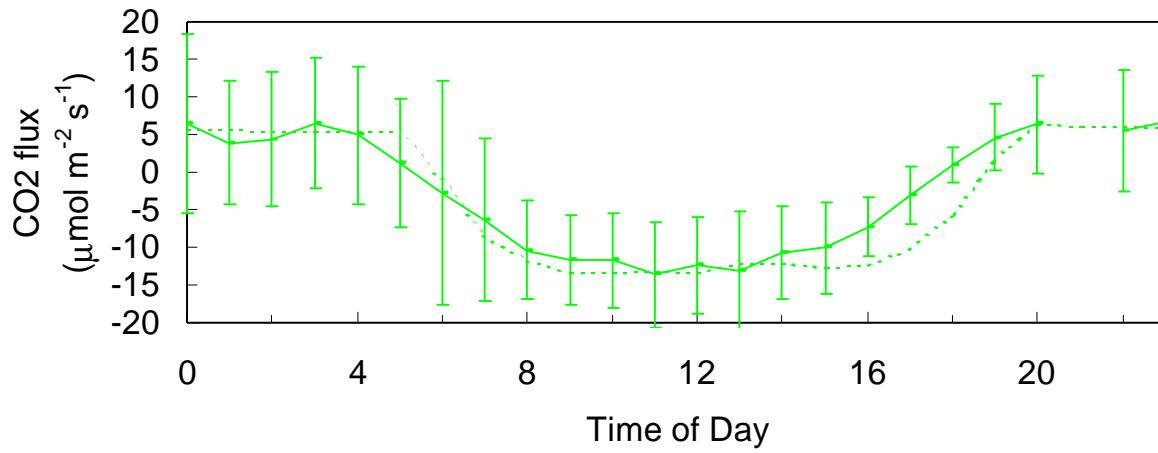


# Surface Mapping with RS Data

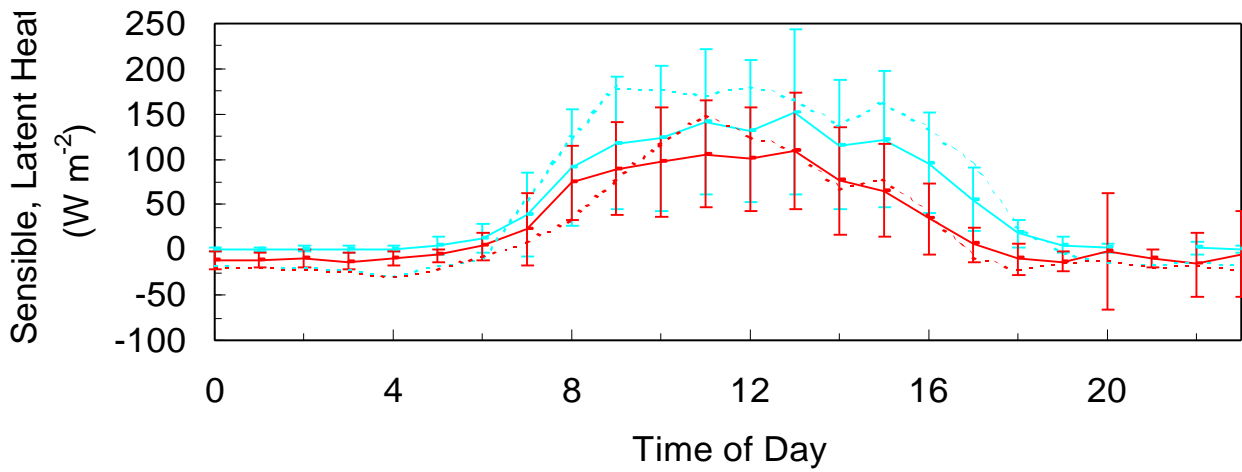


Tess Krebs , Lara Prihodko

# Diurnal Averages - July 1997



— CO2    ..... CO2-SiB2

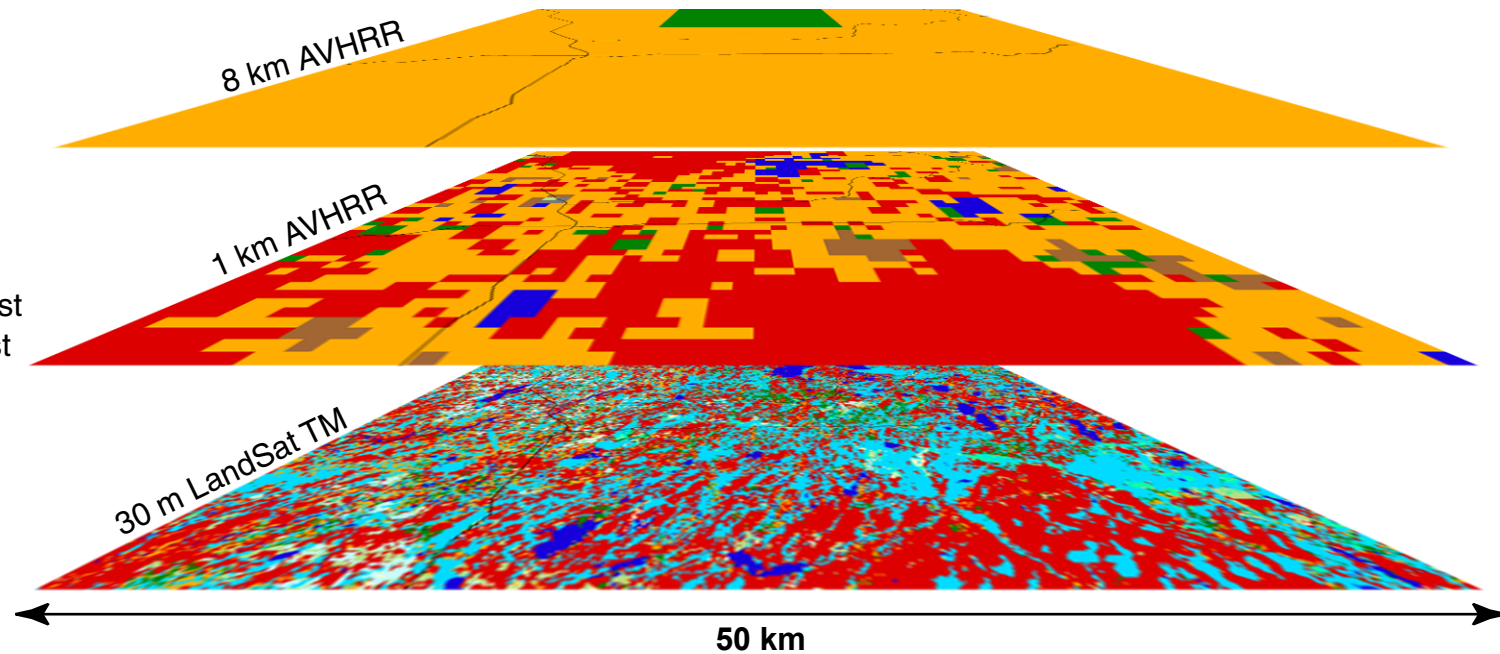


— H2O    — H    ..... H2O-SiB2    ..... H-SiB2

# Vegetation Maps from Satellite Images at three resolutions

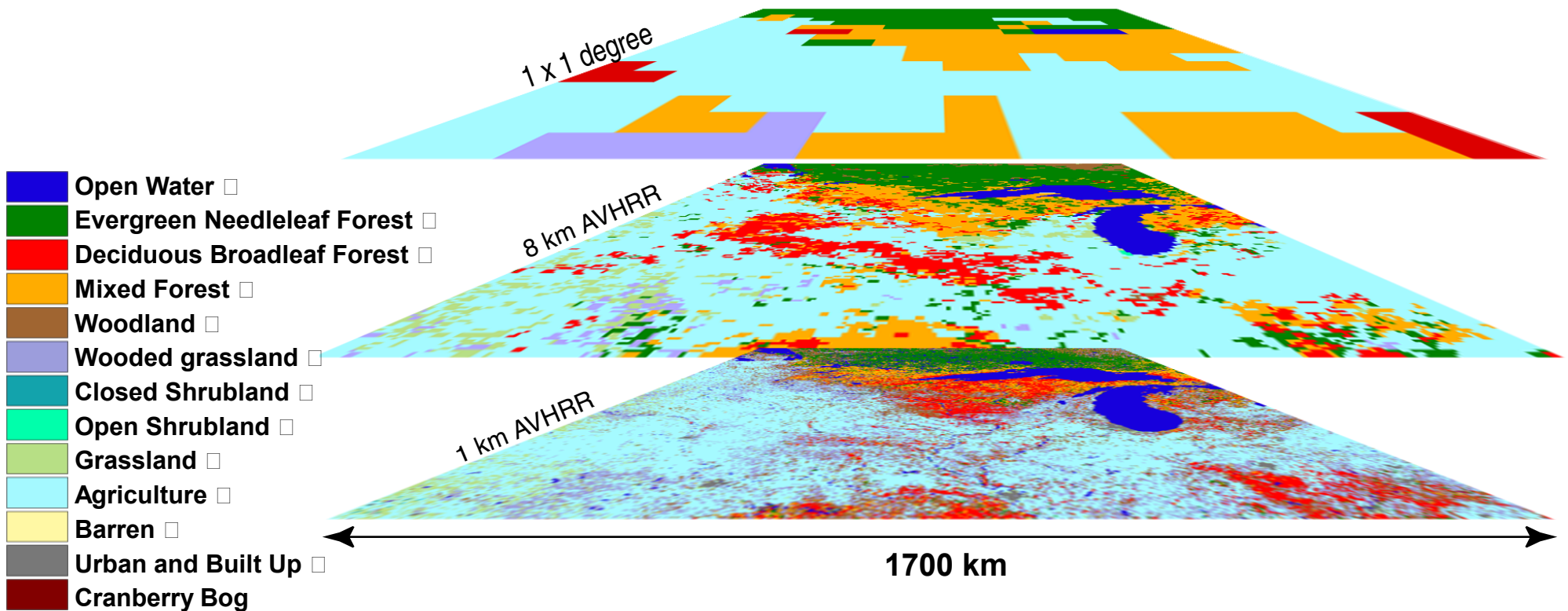
## WLEF-TV Tower Site

- Urban and Built Up
- Agriculture
- Cranberry Bog
- Grassland
- Evergreen Needleleaf Forest
- Deciduous Broadleaf Forest
- Mixed Forest
- Open Water
- Wetland
- Barren
- Shrubland
- Woodland



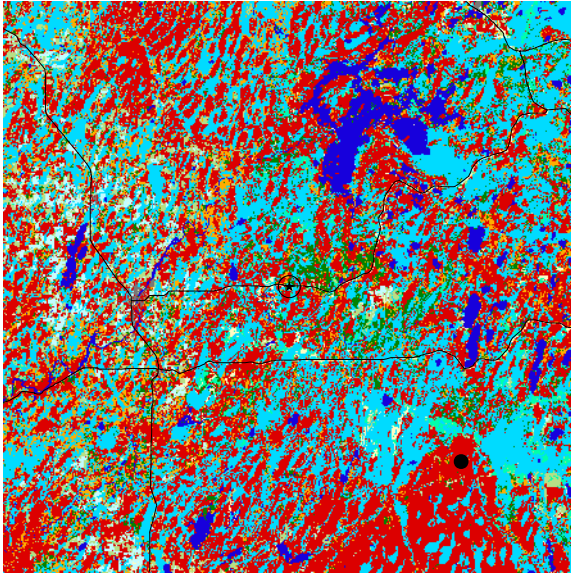
# Vegetation Maps from Satellite Imagery at three resolutions

## Upper Midwest Mesoscale Domain

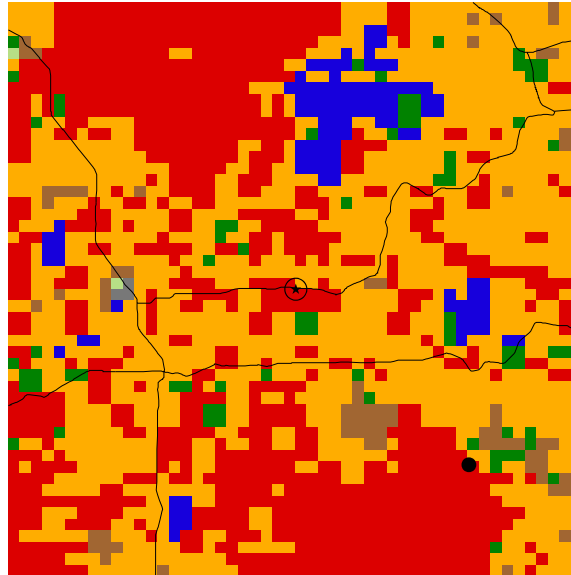


# WLEF tower site - Wisconsin

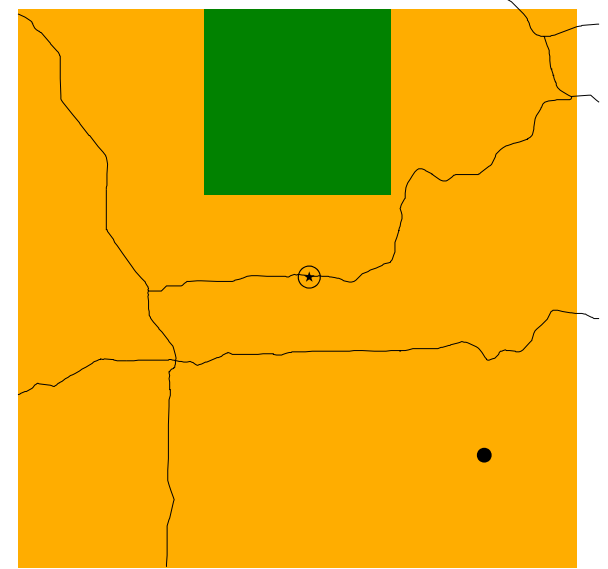
30 Meters



1 Kilometer



8 Kilometers



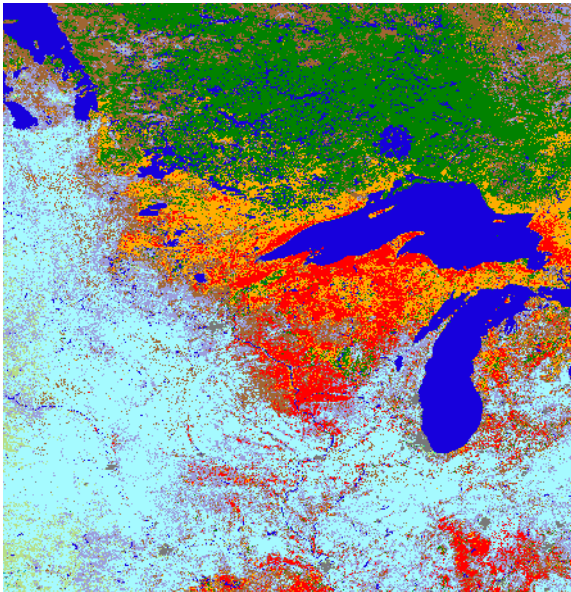
- Willow creek
- ⊛ Tall tower
- ⚡ Roads
- Landcover
  - Urban and Built Up
  - Agriculture
  - Cranberry Bog
  - Grassland
  - Evergreen Needleleaf Forest
  - Deciduous Broadleaf Forest
  - Mixed Forest
  - Open Water
  - Wetland
  - Barren
  - Shrubland
  - Woodland

0 10 20 30 40 50 Kilometers

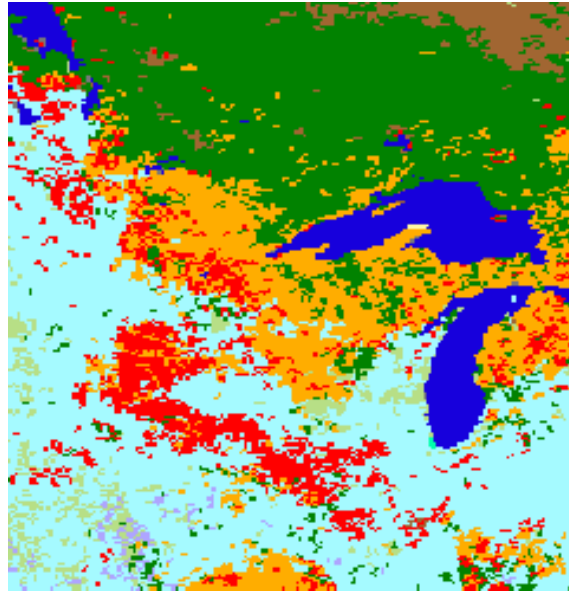
A horizontal scale bar with alternating black and white segments, marked with the numbers 0, 10, 20, 30, 40, and 50.

# Upper Midwest Mesocale Domain

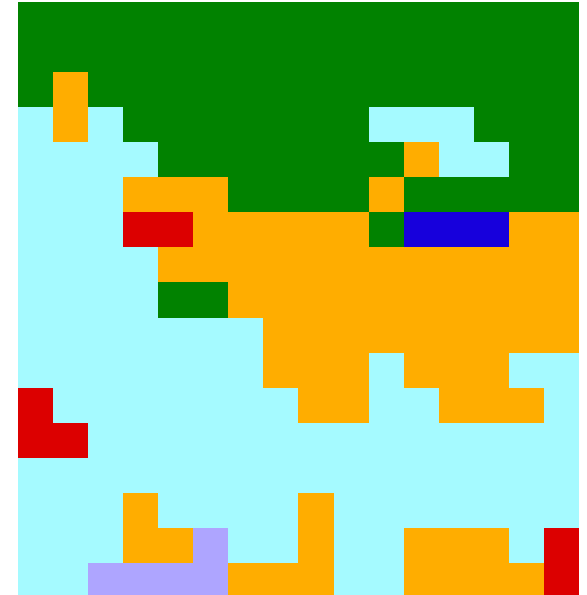
1 Kilometer



8 Kilometers



1 Degree



## Landcover

- Open water
- Evergreen needleleaf Forest
- Deciduous Broadleaf Forest
- Mixed Forest
- Woodland
- Wooded grassland
- Closed Shrubland
- Open Shrubland
- Grassland
- Agriculture
- Barren
- Urban and Built Up
- Cranberry Bog

0 500 1000 Kilometers

